



composizione

100% fibra polipropilenica heatset

peso fibra

1800 g/m² ca.

peso totale

2600 g/m² ca.

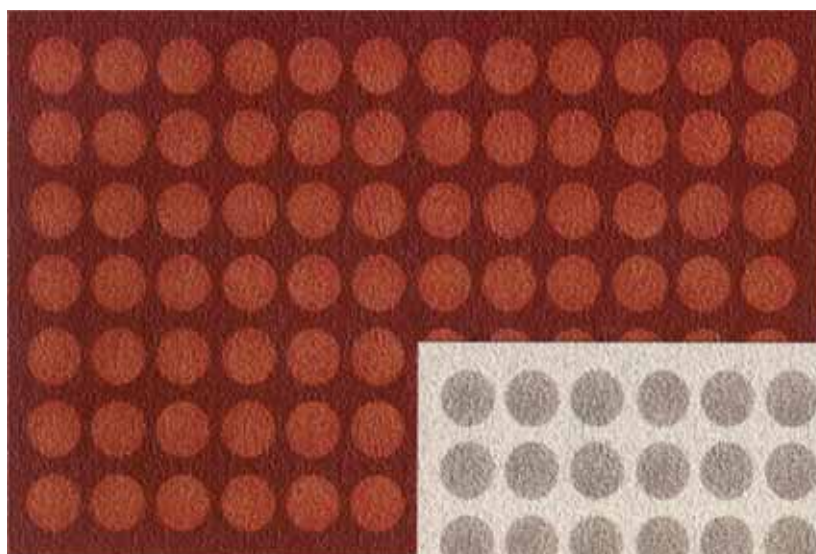
altezza pelo

+/- 40 mm

dimensioni tappeti

cm.133x195- cm.165x235



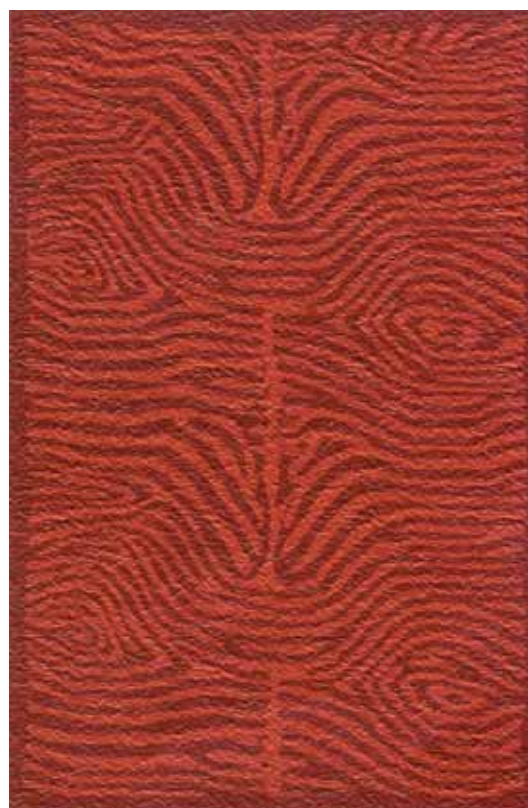


Ref. 3103/18
Dimensioni:
cm 133x195 - 165x235

Ref. 3103/33
Dimensioni:
cm 133x195 - 165x235



Ref. 3109/18
Dimensioni: cm 133x195 - 165x235



Ref. 3109/33
Dimensioni: cm 133x195 - 165x235



Ref. 3125/18

Dimensioni:
cm 133x195 - 165x235

Ref. 3125/30

Dimensioni:
cm 133x195 - 165x235



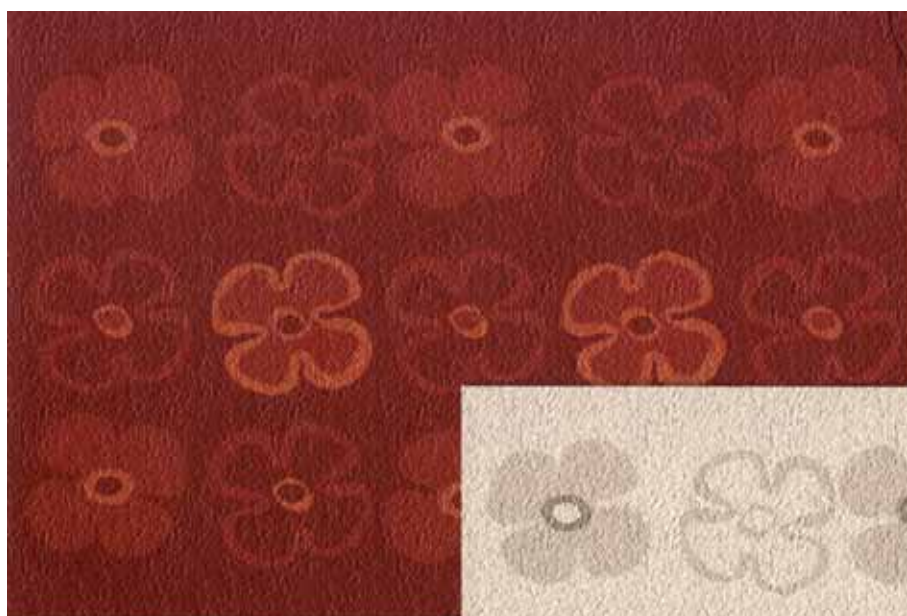
Ref. 3112/30

Dimensioni:
cm 133x195 - 165x235



Ref. 3112/18

Dimensioni:
cm 133x195 - 165x235



Ref. 3113/18

Dimensioni:
cm 133x195 - 165x235

Ref. 3113/33

Dimensioni:
cm 133x195 - 165x235

